

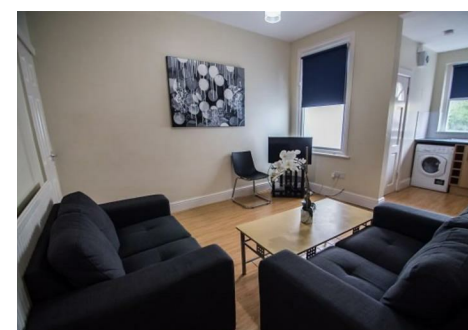
### Viewings

Viewings by arrangement only.  
Call 0114 2666300 to make an appointment.

### Vendors Comments

Add text here

Energy Efficiency Rating		
	Current	Potential
Very energy efficient - lower running costs		
(92 plus) <b>A</b>		
(81-91) <b>B</b>		
(69-80) <b>C</b>		
(55-68) <b>D</b>		
(39-54) <b>E</b>		
(21-38) <b>F</b>		
(1-20) <b>G</b>		
Not energy efficient - higher running costs		
<b>England &amp; Wales</b>	EU Directive 2002/91/EC	



89 Peveril Road, Sheffield, S11 7AQ

£1,261 Per month

- Student: £97 per person per week
- Bills included option includes gas, electricity, fibre internet, TV licence and water bills
- Very close to Endcliffe Park
- Three good size bedrooms
- Early viewing highly recommended to avoid disappointment
- Bills included option available at £127 per person per week
- Ideal for students at Sheffield Hallam University
- Available for a group of 3
- Very close to Ecclesall Road
- EPC Grade D

## 89 Peveril Road, Sheffield S11 7AQ

\*\*\* STUDENT \*\*\* £97ppw \*\*\* BILLS INCLUDED OPTION AVAILABLE AT £127ppw (Includes gas, electricity, fibre internet, TV licence and water bills) \*\*\* EXTREMELY CLOSE TO ENDLIFFE PARK \*\*\* AVAILABLE FOR A GROUP OF 3 \*\*\*

A LARGER THAN AVERAGE three bedroom mid terrace property, located conveniently for SHEFFIELD HALLAM UNIVERSITY. Close to an abundance of local amenities on ECCLESALL ROAD and situated very close to Endcliffe Park.

In brief the accommodation comprises: entrance hall, living room, separate kitchen, large ground floor double bedroom, first floor double bedroom, bathroom/WC, additional study/office room and a large attic double bedroom. Garden to the rear.

An early viewing is highly recommended to avoid disappointment!

EPC Grade D.



Council Tax Band: B

